

PDE Update

2021 Pennsylvania Association of College and Teacher
Educators Teacher Education Assembly

Tanya I. Garcia, Ph.D. & Debra Heath-Thornton, Ed.D.

Office of Postsecondary and Higher Education

October 28, 2021

Overview

- Educator Workforce Update
- American Rescue Plan Elementary and Secondary School Emergency Relief (ARP ESSER)
- 2020-21 Year in Review
- Announcements

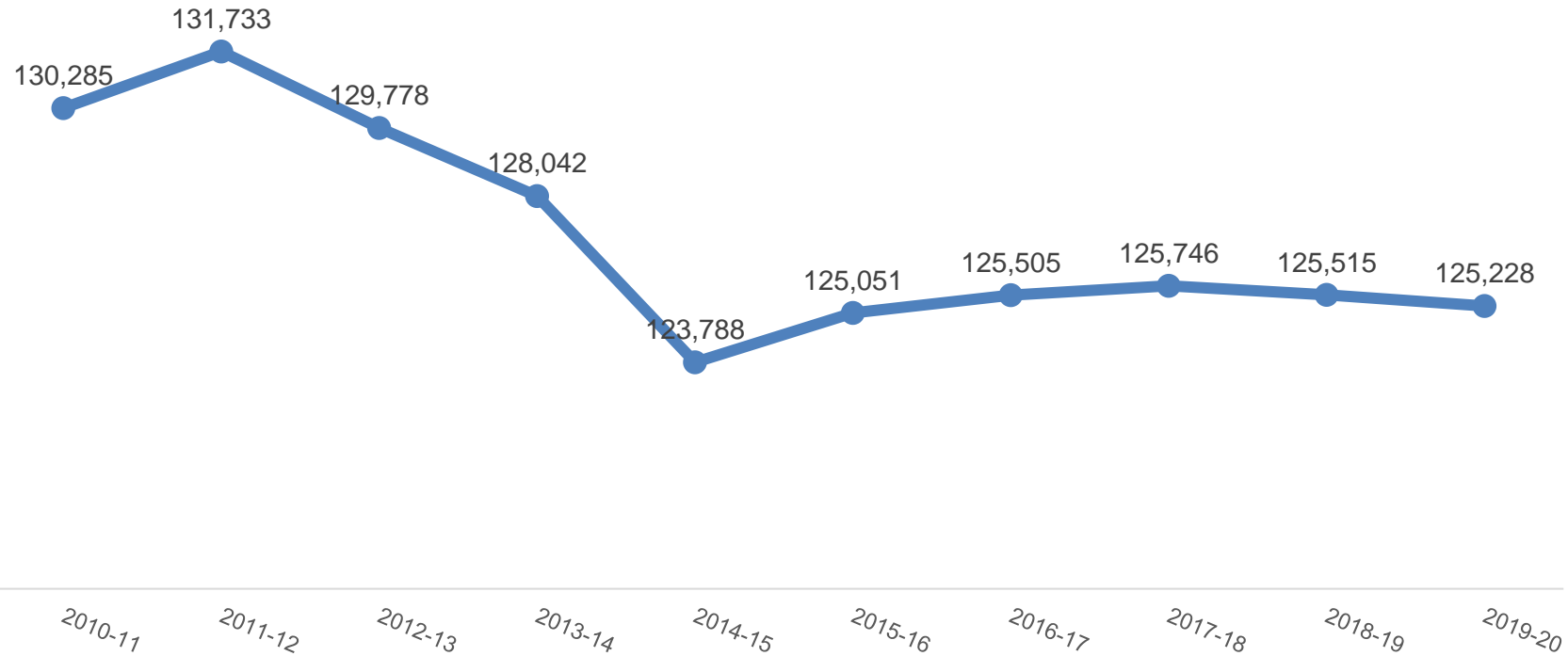
Educator Workforce Update

▶ Educator Workforce Update

- High school graduates
- Postsecondary enrollment
- Educator preparation program enrollment

High School Graduate Trends

Public High School Graduates

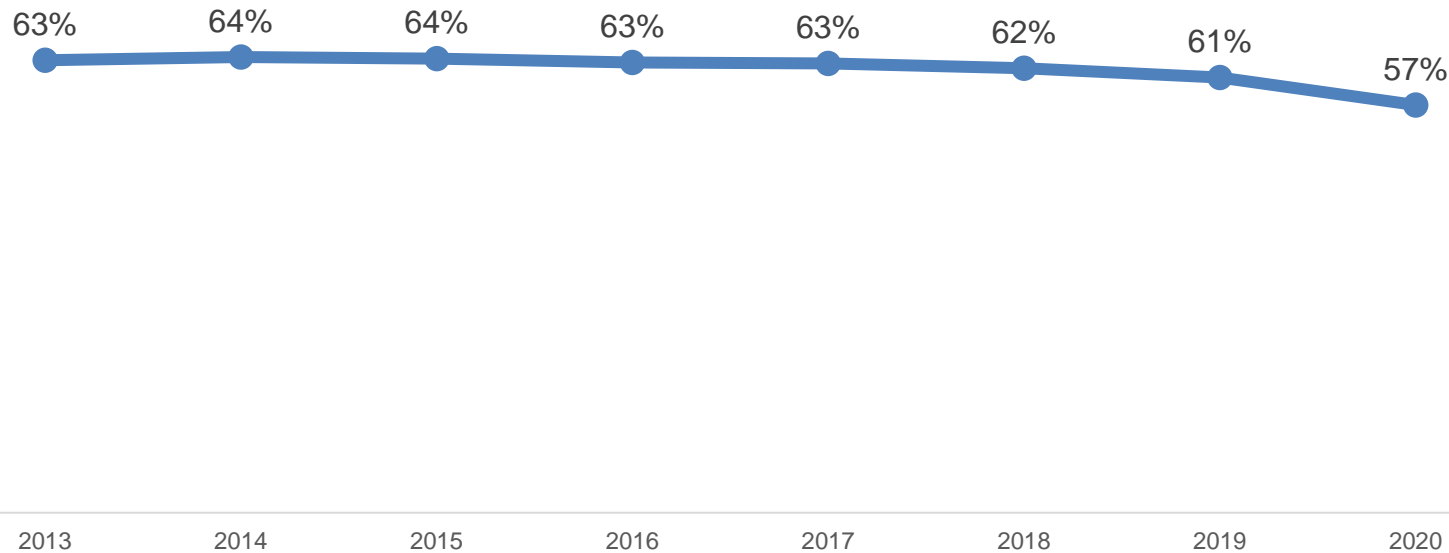


The number of public high school graduates has dropped since 2010.



Postsecondary Enrollment Trends

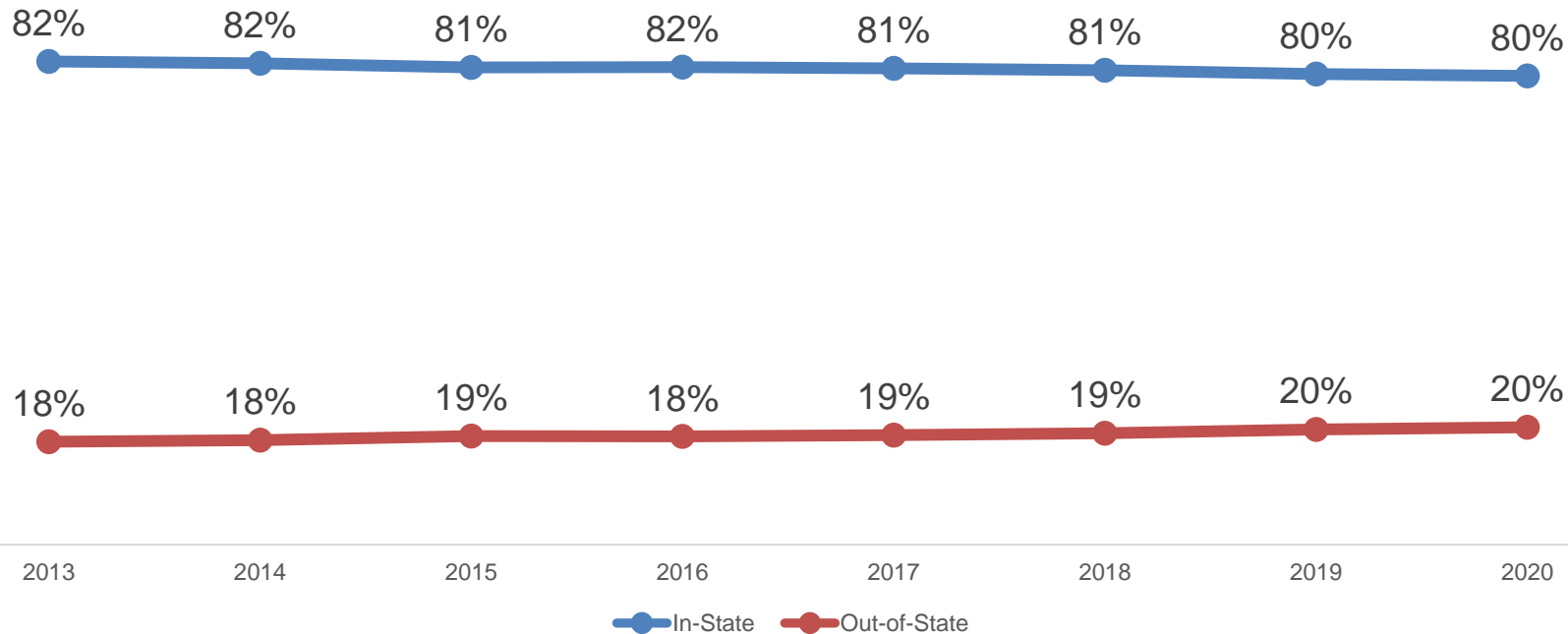
Enrollment of High School Graduates in Postsecondary Education
Within One-Year of High School Graduation



The number of public high school graduates enrolling in postsecondary education has also been declining.

Postsecondary Enrollment Trends

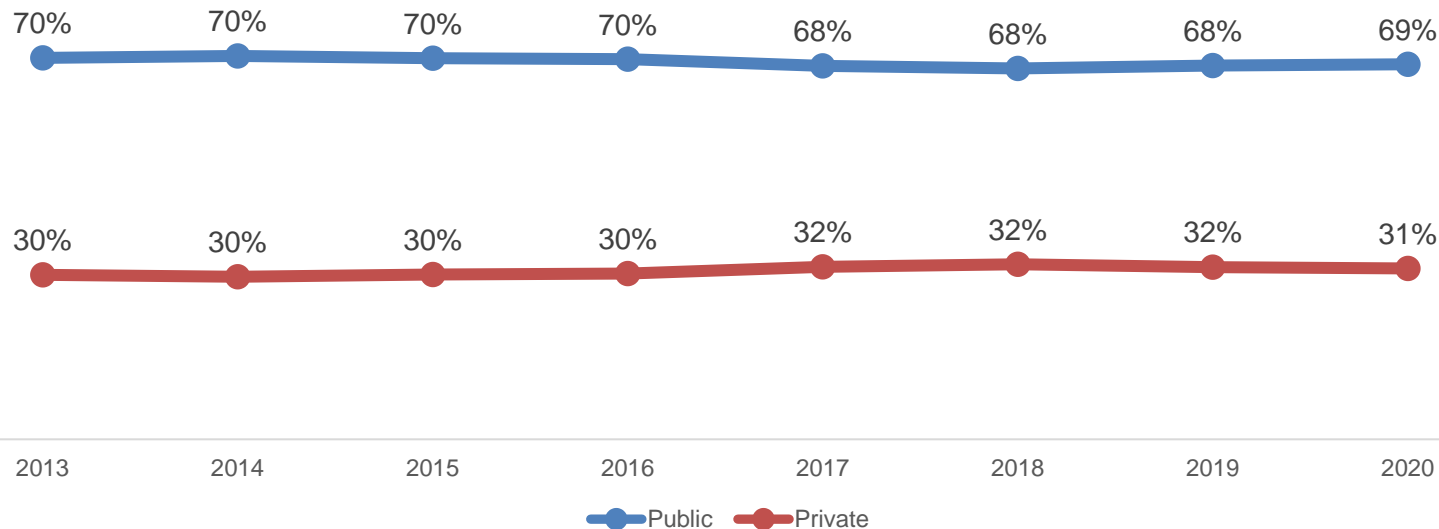
Enrollment of High School Graduates in Postsecondary Education, In-State and Out-of-State, Within One-Year of High School Graduation



While most public high school graduates are staying in PA for college, that number has been dropping.

Postsecondary Enrollment Trends

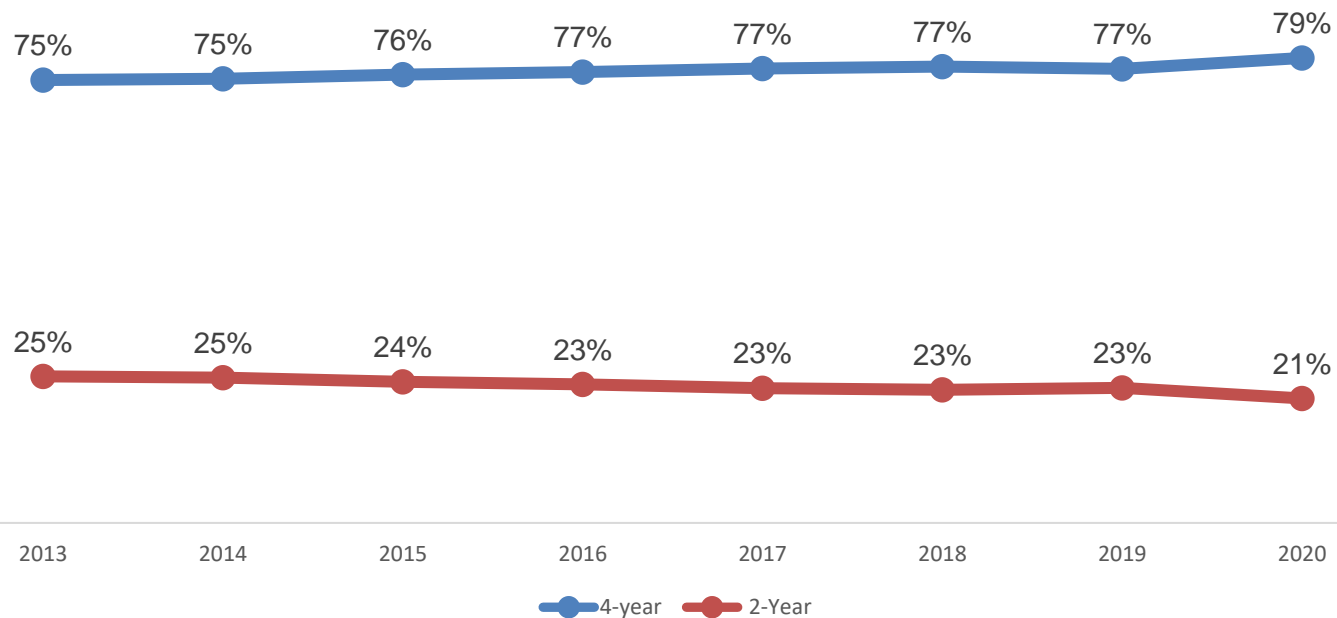
Enrollment of High School Graduates in Public and Private Postsecondary Education Within One-Year of High School Graduation



The proportion of public high school graduates attending private or public colleges has held steady.

Postsecondary Enrollment Trends

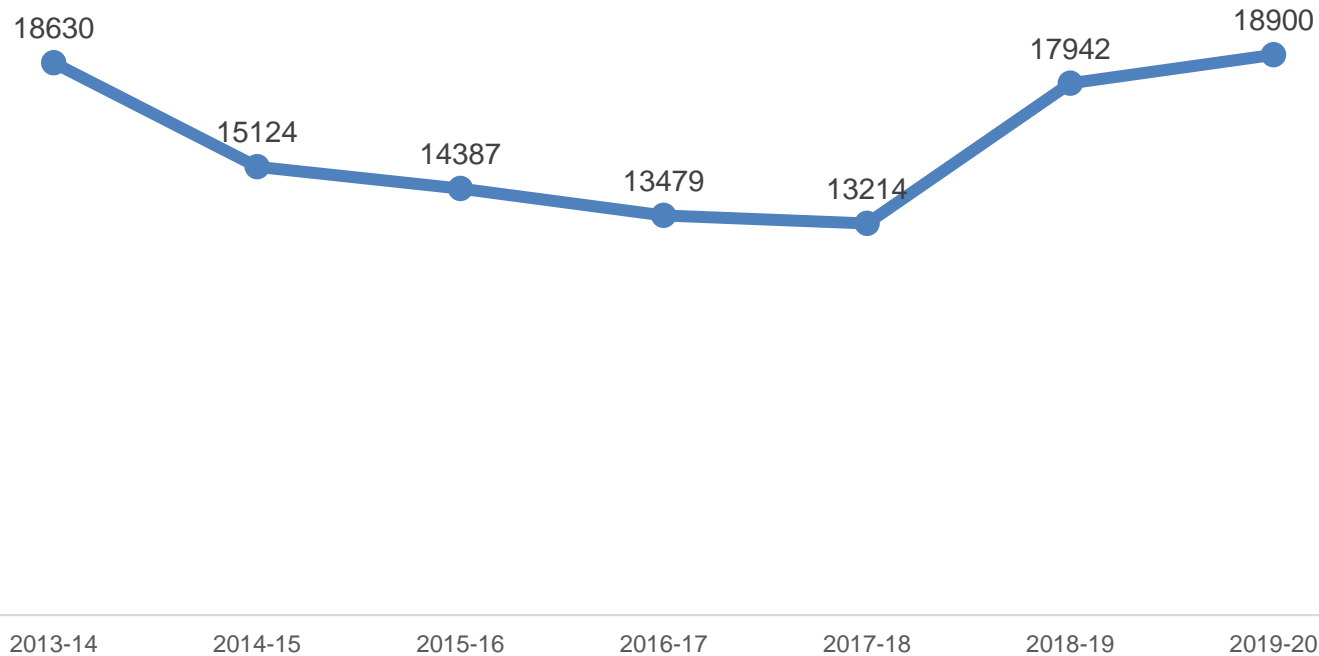
Enrollment of High School Graduates in 2-year and 4-Year Postsecondary Education Within One-Year of High School Graduation



More public high school graduates are enrolling in 4-year colleges than in 2-year colleges.

Educator Preparation Program Enrollment Trends

Enrollment in Educator Preparation Programs

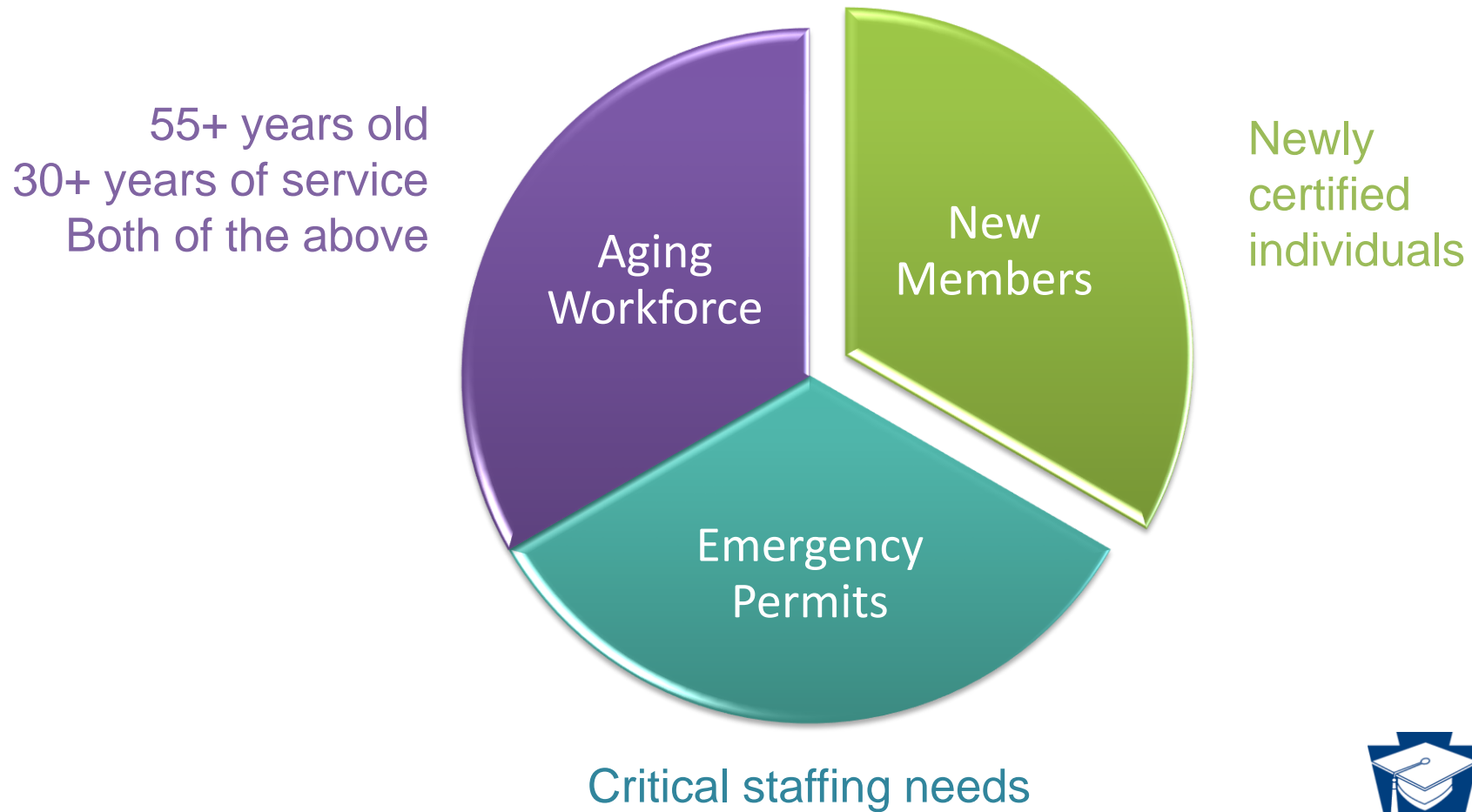


In spite of the trends in public high school graduates, there has been a recent uptick in educator preparation program enrollment.

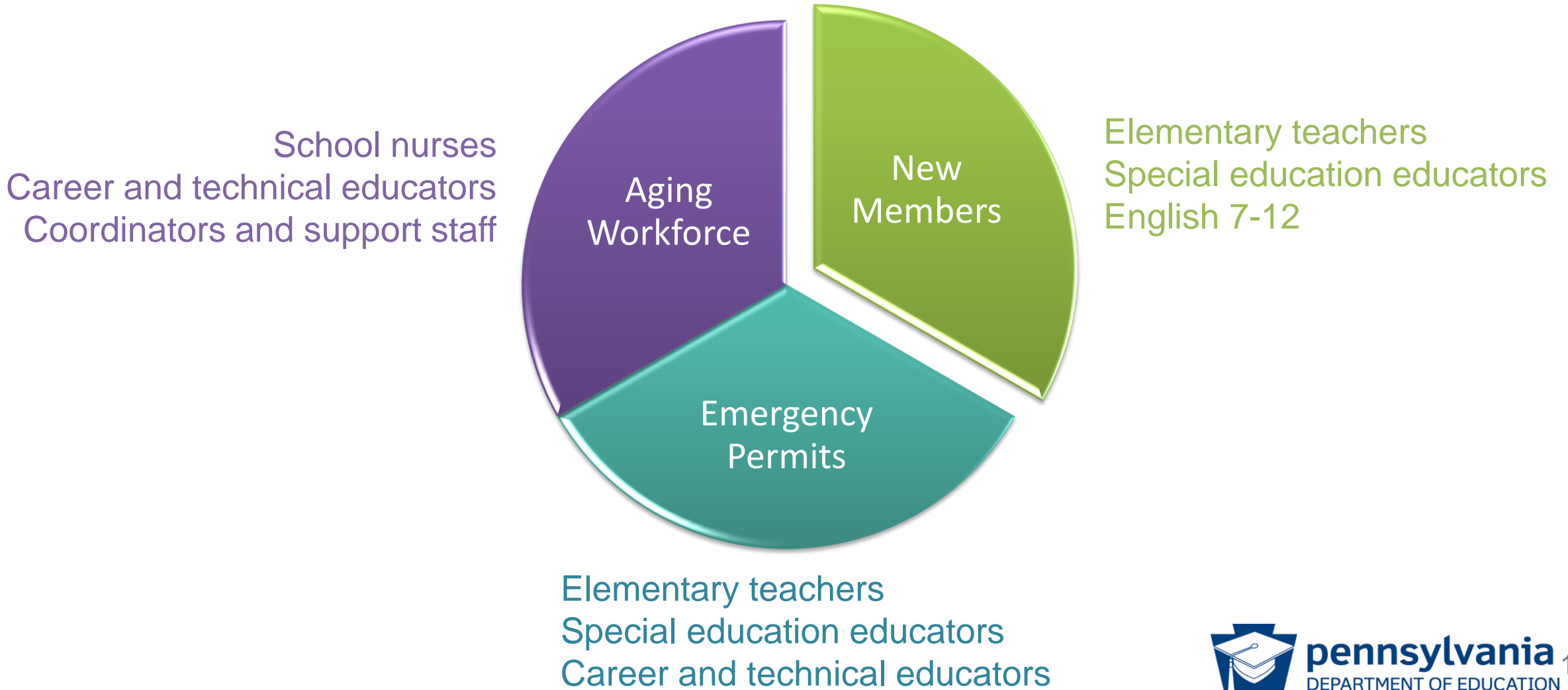


American Rescue Plan Elementary and Secondary School Emergency Relief (ARP ESSER)

Developing Indicators of the Health of the Educator Workforce



ARP ESSER: Educator Workforce, 2019-20



▶ ARP ESSER: Supporting the Educator Workforce

- The educator workforce represents a critical sector of Pennsylvania's workforce - educators play a doubly important role in preparing young people to participate in the state's future workforce
- This increases the importance of strengthening the relationships between the K-12 and postsecondary sectors

▶ ARP ESSER: Voices from LEAs and Ed Prep Programs

What LEAs want:

Educator preparation programs to incorporate their advice and counsel into educator preparation program curricula

What Ed Prep Programs want:

District and school leaders to allow new educators to put into practice the pedagogical competencies they worked hard to earn

➤ ARP ESSER: Next Steps

- Upgrade Pennsylvania Information Management System (PIMS) and Teacher Information Management System (TIMS) to:
 - Help LEAs anticipate and plan for staffing needs
 - Share this data with colleges and universities that have educator preparation programs to better align the postsecondary sector to LEA needs

2020-21 Year in Review

New certifications

- Computer Science 7-12 (December 2020)
- Special Education PK-12 (March 2021)
- School Social Worker PK-12 (April 2021)

- **Update of Chapter 49: Certification of Professional Personnel**
 - PDE staff supported the State Board
 - Final public comment review period began February 2021
 - Team members included PDE staff from legal, OESE, and OPHE

2020-21 Year in Review



Every child deserves a champion:

an adult who will never give up on them, who understands the power of connection, and insists that they become the best that they can possibly be...

- Rita Pierson



pennsylvania
DEPARTMENT OF EDUCATION

New graduate guide

- For newly certified educators
- Obtaining and maintaining certification



pennsylvania₂₀
DEPARTMENT OF EDUCATION

Announcements

Federal TEACH Grants

Teacher Education Assistance for College and Higher Education (TEACH) Grants

**In the
last
five
years**

(2016-17 to
2020-21)

890

**Pennsylvania
residents**

1,517

**Total # of
grants**

28

**Pennsylvania
IHEs
participating**

12%

**Grants
converted to
federal loans**



Teacher Education Assistance for College and Higher Education (TEACH) Grants

- New TEACH regulations changed to reduce reporting burden on students to certify employment annually
- Forthcoming changes to TEACH program in American Families Plan

Chapter 354 Annual Report for 2021

Timeline for Report Collection

- November 1: Access to the SharePoint server will be open
- November 29: Annual Report due to PDE
- December 14: Liaison follow-up to survey responses requiring additional information

Please contact Sonya Harris Saunders (sharrissau@pa.gov) or Jamal Wakeem (jwakeem@pa.gov) with questions you may have regarding this request

How to Reach BSLTQ

Ed Prep Program Questions

- Sonya Harris Saunders, sharrissau@pa.gov
- Jamal Wakeem, JWakeem@pa.gov

Certification Questions

- ra-edcertquestions@pa.gov

▶ Thank you

Questions?