



Pennsylvania Association of Colleges and Teacher Educators

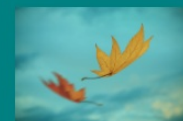
## October 2023 Update

In this month's issue:  
Fall Conference  
Elections  
Membership Information

# Fall Conference in Two Weeks

JOIN US AT THE CONFERENCE  
OCTOBER 25-27

Registration still open! <https://www.pac-te.org/i4a/pages/index.cfm?pageID=3353>



Act 48 Hours  
are available!



"THIS is Us": Educators rooted in  
inquiry, action, and progress

FEATURING TOP  
SPEAKERS, PDE, MORE

## Conference Registration is Going On NOW

If you've put it off, here's your chance to visit our Fall Conference page to register for the Fall Conference, PAC-TE's

## Teacher Education Assembly (TEA).

Choose to attend one, two, or all three days--whatever your schedule allows! The Best Western Premier: The Central Hotel and Conference Center in Harrisburg provides a convenient and comfortable location near Harrisburg, Hershey, and many State Parks at the prime time of year for leaf peeping .

PRICING (covers admissions, two meals, and resources):  
Members: \$225 if you act by **October 24**. We will also accept walk-ins at the door for \$275.

Education Students: Free if PAC-TE student members; \$50 otherwise.

Non-members: \$275 until October 24. Pay at the door \$300.  
Hint: If you join PAC-TE or renew your membership before you register, get the \$50 discount on the conference costs!

### PROGRAM:

The schedule is packed with worthwhile [sessions](#) matching this year's theme. 85 of your peers are serving as presenters, with another large number helping out as session presiders. Our association's strength is in its members!

### Highlights:

- Opportunities to meet with peers face to face
- Keynote: Dr. Donna-Marie Cole-Malott, Co-Executive Director of PEDC
- Two (2) PDE sessions. Be sure to come meet Deputy Secretary of Postsecondary and Higher Education, Dr. Kate Shaw, on Thursday and the newest Chief of the Division of Professional Education and Teacher Quality, Dr. Katina Moten, on Wednesday afternoon.
- A larger number of *interactive* sessions, plus a number of *work-in-progress* sessions in which faculty share ongoing projects and seek feedback from the audience. Come find out what they're up to!
- PAC-TE Annual Meeting. Attend to learn the actions of your PAC-TE Board of Directors and cast a vote on PAC-TE business items.
- Meet the candidates running for PAC-TE Board of Directors open positions. The election opens during the conference so you can vote before you leave.

- Food. Wednesday attendees are invited to our dinner banquet and awards presentations. Our traditional Dessert Buffet is on Wednesday night. Thursday attendees enjoy a "Taste of Italy" buffet luncheon after the PAC-TE Annual Meeting. Snack breaks and coffee are available throughout the day. Note: Day of conference walk-in registrants cannot expect meals. Meal counts are given to the hotel a few days in advance, so be sure to register ahead of time.

**HOTEL ROOMS:** You must contact the hotel directly at (717) 561-2800 to inquire about available rooms. Other hotels are nearby if the Best Western is full.

**NOTE:** Membership dues do not automatically register anyone for this conference. Conference attendance and payments are separate from association membership.



## Board Seats up for Election

This year PAC-TE members have really stepped up for service. We have a large slate of candidates running for seats. Please be sure to cast your votes when the ballot opens at the end of the month. [Click for PAC-TE Election Information and Bios](#)

## Membership Help

Reminders and tips for making the most of your membership.

1. Only members can register for events online, using their distinct username (often your work email, but not always), and a password.
2. Our website has a "create a new password" option. You may contact our Executive Director for help at [joel@pac-te.org](mailto:joel@pac-te.org).
3. Do not create a new account when you can't log in. See tip #2.
4. Monthly newsletters like this one are now archived on our website, so if you are hunting for information, try going to [Newsletters](#).
5. Institutional membership renewal can be done online or over the

phone (and should be done as soon as you return to campus for the fall semester--in the summer time if possible). Please call our Executive Director if you need assistance. Do not create a new account.

6. Membership and conference registration are two separate things. One does not equal the other.
7. Events, forms, or resourced are further detailed on our **website**. Click on the various tabs and icons to explore. Use the Contact Us icon (upper right corner of home page) to send an inquiry.
8. PAC-TE will post jobs for its Institutional Members. Send a Word or PDF version with all the details (and a closing date for applications) to our Executive Director at **joel@pac-te.org**.
9. We are on Social Media. Check our Linked In, Facebook, and Instagram feeds. Share your news and questions there.



## Dates for your Calendar

**October 25-27: Fall Conference (Teacher Education Assembly)**

**October 25 - November 30: Election for PAC-TE Board of Directors**

**March 20, 2024: Spring Conference (Virtual)**

PAC-TE is a state unit of AACTE and ATE



AACTE and PAC-TE collaborate to strengthen their advocacy efforts, share experience and expertise, and expand their members' professional development opportunities. To this end, our Chapter's relationship with AACTE is a voluntary affiliation that allows us to advance our members' interests.



The Pennsylvania Association of Colleges and Teacher Educators

[joel@pac-te.org](mailto:joel@pac-te.org)

· 717-516-8893 ·

If you have suggestions for a future *Update*, please contact us using the methods shown above.

FOLLOW US



Pennsylvania Association of Colleges and Teacher Educators | 11 Rife Dr., Mechanicsburg, PA  
17050

[Unsubscribe \[joel@pac-te.org\]\(mailto:joel@pac-te.org\)](#)

[Constant Contact Data Notice](#)

Sent by [joel@pac-te.org](mailto:joel@pac-te.org) powered by



Try email marketing for free today!